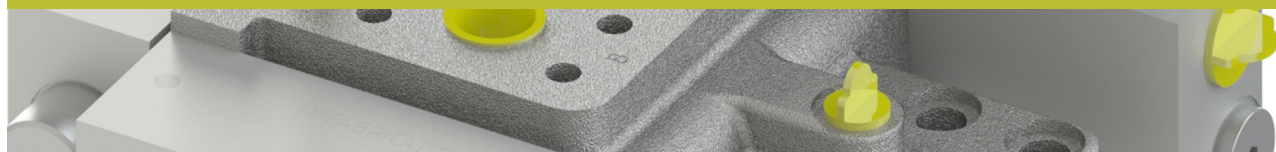


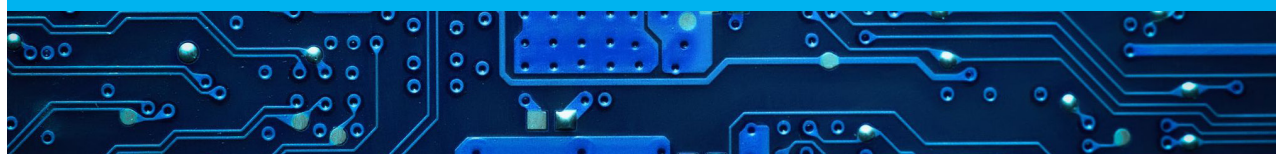
SPECIALIST IN SMALL AND MEDIUM SERIES

4 COMPLEMENTARY ACTIVITY SECTORS

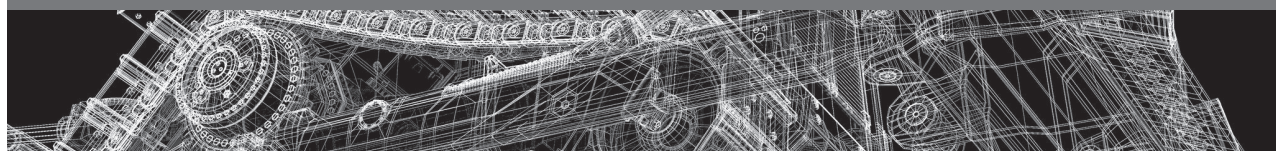
HYDRAULICS



ELECTRONICS



SIMULATION

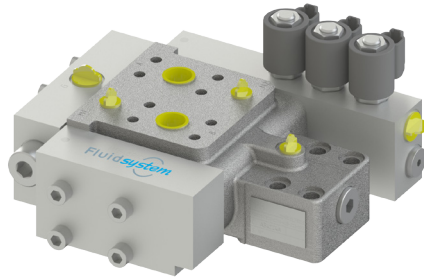


PRECISE SHEET METAL FORMING



FLUIDESIGN IS CERTIFIED BY THE FRENCH MINISTRY OF RESEARCH AND HIGHER EDUCATION FOR THE "RESEARCH TAX CREDIT (C.I.R)"

DESIGN AND MANUFACTURE OF HYDRAULIC COMPONENTS



Fluidsystem

FLUID-SYSTEM specializes in the design and manufacture of hydraulic components.

The compact, reliable, cost effective and robust design of the systems will improve your equipment performance while cutting the running costs of the machine.

With its flow dividers, FLUID-SYSTEM is the world leader in anti-slipping systems for hydrostatic transmissions.



FLUID-SYSTEM

CEREBRUM

HYDRAULICS COMPUTER SIMULATION MODELING AND R&D

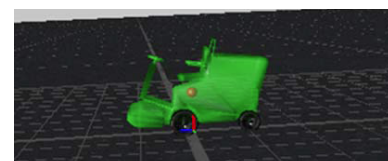
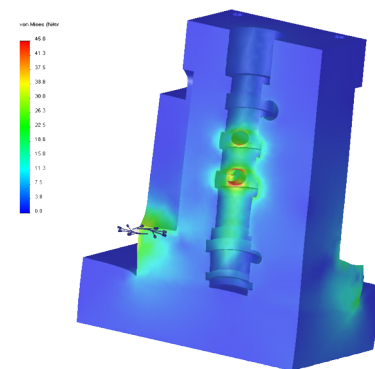


CEREBRUM Engineering, with its kinematics and fluid mechanics expertise, can help you with:

- New product development R&D
- Complex phenomenon understanding
- Competitive technical benchmarking

The development of your model through powerful software actively transforms theoretical results into operational products.

CEREBRUM works on tangible results for you to achieve profitability and a competitive edge.



PRECISE SHEET METAL FORMING



TECHNIPLI specialized in precise sheet metal forming.

We are equipped with powerful machinery combining laser, punching tools (up to 8mm), and bending tools (up to 3m) to manufacture your prototype and your series.

Thanks to our expertise in all the welding processes, TECHNIPLI ensures the perfect mechanical assembly of your parts. We also perform all type of surface treatment.

TECHNIPLI

ELECTRONIC CONTROLLERS



DESIGNTRONIC designs and manufactures adapted electronic and mechatronic solutions to be mounted in your vehicle to improve human/ machine interaction.

Thanks to our expertise in mobile machines, we have a deep understanding of your applications for the programming of your controllers and monitors.



DESIGNTRONIC



4, rue du moulin Cuzieu
42420 LORETTE, FRANCE

Tél : +33(0) 4 77 73 70 70
Fax : +33(0) 4 77 73 70 79

www.fluidesign-group.fr

FLUIDESIGN Group is also covering the US market



www.fd-groups-america.com

FLUID-SYSTEM

4 rue du moulin Cuzieu
42420 LORETTE, FRANCE
Ph. : +33(0) 4 77 73 70 70

WWW.FLUID-SYSTEM.FR

DESIGNTRONIC

31, rue du Canal
59400 CAMBRAI, FRANCE
Ph. : +33(0) 3 27 83 89 29

WWW.DESIGN-TRONIC.FR

CEREBRUM INGÉNIERIE

4 rue du moulin Cuzieu
42420 LORETTE, FRANCE
Ph. : +33(0) 4 77 73 70 70

WWW.CEREBRUM-INGENIERIE.FR

TECHNIPLI

76 rue Jean Monnet
Zone Artisanale La Sensive
44450 LA CHAPELLE BASSE MER,
FRANCE

Ph. : +33(0) 2 40 31 36 93

WWW.TECHNIPLI.FR